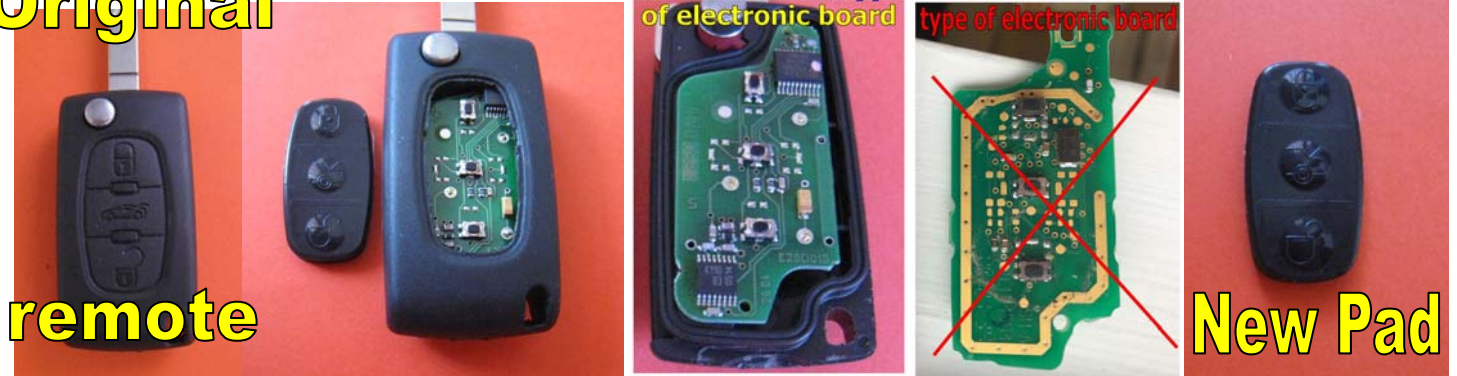


This procedure for **“Peugeot 107 206 207 307 407 308 607 Partner, Expert button flip key fob remote key Buttons Replacement ”also compatible with Citroen C,C2 ,C3,C4,C5C6,C8, Xsara Picasso** was prepared by Polmex – Western Australian supplier of Silicone Button Replacements for remote key controls of various car makes and models: Land Rover, Range Rover, Toyota, Mitsubishi, Kia, Holden, Commodore, Ford, Hyundai, BMW and more...

For Orders please visit us on line at www.polmex.com.au

Original



Silicone Replacement Pads from POLMEX for worn flip Peugeot remotes with 2 buttons or 3 buttons.

You are replacing worn key buttons in Peugeot 107 206 207 307 407 308 607 Partner, Expert and other models as long as your remote looks the same.

Our press fit Pad is the simplest fix to your remote with worn key pad. You **DO NOT** remove and swap internal modules. **NO gluing** needed, **NO re-programming** , **NO key cutting** required .

Our replacement Buttons are made from LSR Silicone and will not brake, due to deteriorating effects of sunlight, water and chemicals commonly encountered in service such as Detergent, Oil, and Methanol. Silicone buttons are flexible and will not deform, change shape, degrade and brake over period of time.

Original





Position flat screwdriver in a small slot located at the bottom of remote and twist it. Remote will split open.



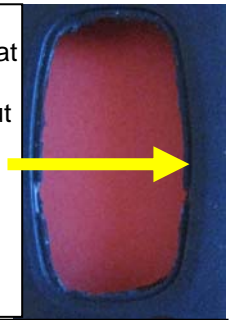
Separate parts of your remote. One part consists of key blade and top part with key buttons and electronic board.



Separate electronic board from top part of your remote in preparation for removing an existing plastic key pad.



You have to make sure that grooves around cut out are free from old rubber remnants before you press fit new pad in.



- If key buttons in your remote are already broken, you can just simply use flat screwdriver to remove remaining rubber pieces.
- If key buttons are harder to remove than, you can pre-warm key buttons with hand held hair drier. It will make plastic more pliable and easier to remove.
- You can also use Stanley knife to remove existing key pad from the cover. In this instance you have to be careful not to cut into the hard plastic.
- If after removing old rubber buttons you see horizontal bars which are still intact than you have to cut it out. In majority of worn remotes bars are already broken and when you remove old rubber buttons bars come out with the old rubber. Some remotes may still have bars well attached and they have to be removed so our pad fits in. Our pad does not need horizontal bars for extra support as it is strong enough without it.



Next press fit your new key pad in the top cover. No gluing is required. Once key pad is in, put your remote together in reverse order and close it.



Your remote is ready for use. **No re-programming is need it** as remote will work straight away.